

Key Features

Logistics warehouse located in the municipality of Carisio (VC) with the following features:

- Total GLA: 19,116* m² ca.
- GLA Warehouse: 16,779 m² ca.
- Mezzanine: 1,597 m² ca.
- Office: 740 m² ca.

**Possible splitting into 2 Units: A (8,534 m²) + B (10,582 m²)*

- Internal height under beam: 10,60 m ca.
- Height: 12,00 m ca.
- Structural grid: 17x17 m
- Floor loading capacity: 8 t/m²
- Loading bays: 15 + 1 van docking platform (4 stations) + 1 truck docking platform (2/3 stations) + 1 level access door + 1 ramp
- 1 Forklift recharge room
- Sprinkler system NFPA/ESFR + evacuation and smoke detectors
- Profondità area manovra: 35 m

Unit A:

GLA 8,534 m² ca. of which:

- WH (Ground floor): 7,524 m²
- WH (Mezzanine): 641 m²
- Office (Ground floor): 121 m²
- Office (1° floor): 124 m²
- Office (2° floor): 124 m²

Unit B:

GLA 10,582 m² ca. of which:

- WH (Ground floor): 9,255 m²
- WH (Mezzanine): 956 m²
- Office (Ground floor): 122 m²
- Office (1° floor): 124,50 m²
- Office (2° floor): 124,50 m²



For more information:

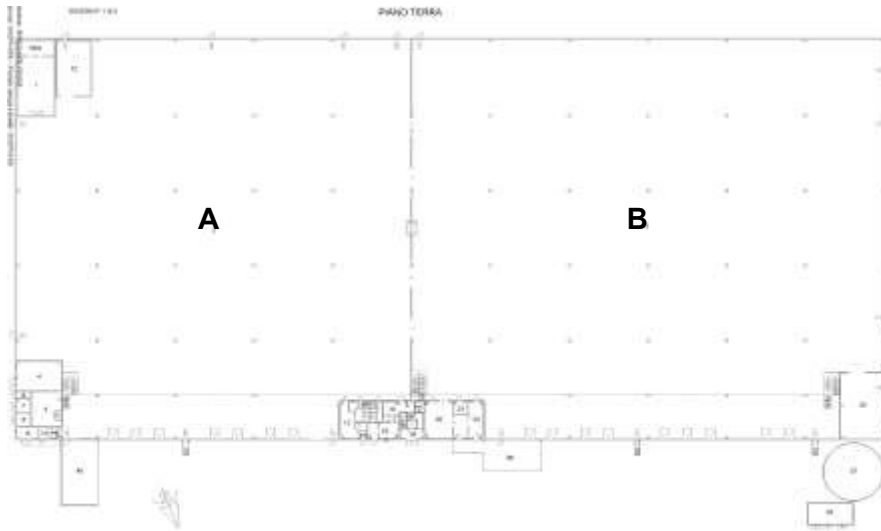
Marzio Granata
02 63799 1

marzio.granata@cushwake.com

Alessandro Gazzari
02 63799 1

alessandro.gazzari@cushwake.com

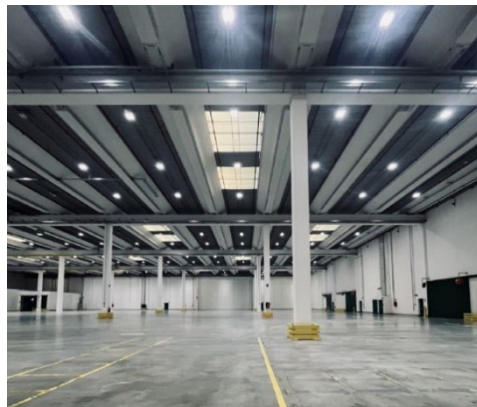
Via Turati 16/18
20121 Milano
cushmanwakefield.com

GENERAL PLAN

Location

The warehouse is located along A4 Motorway, 2 km from the exit «Carisio» and halfway between Milan and Turin.

Distance

| | |
|-------------------|-------|
| A4 exit «Carisio» | 2 km |
| Vercelli | 25 km |
| Novara | 35 km |
| Turin | 64 km |
| Milan | 83 km |


DISCLAIMER

Le informazioni contenute nel presente documento hanno finalità esclusivamente illustrative per quanto riguarda le caratteristiche generali del progetto. Il presente documento e le informazioni in esso contenute non rappresentano un'offerta o un contratto, né vanno interpretate come tali.

In caso di discrepanze tra le informazioni contenute nel presente documento e le condizioni di vendita o di locazione, prevalgono le seconde.